

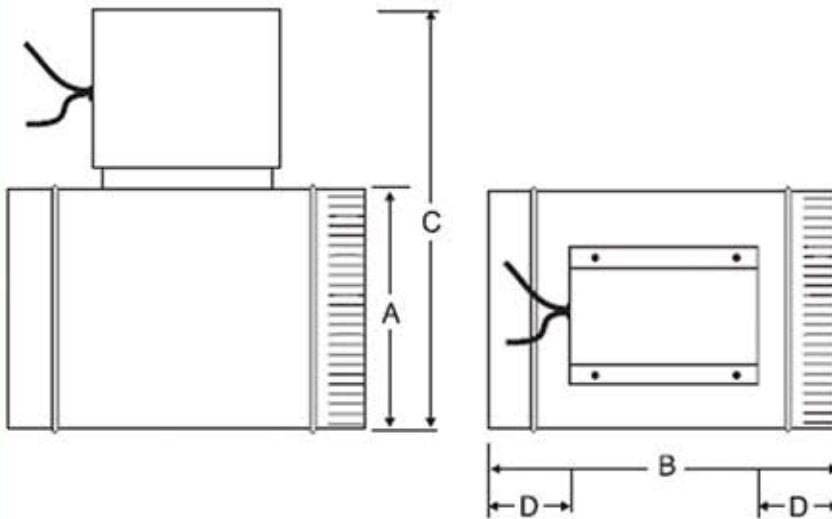


Motorized Damper Category II MACH® Boiler Applications

Flow Control Adjustment

Minimum Flow Adjustment

Minimum flow can be set by loosening the bolt on the shaft and turning the damper from the fully closed position to leave a gap between the gasket and the damper blade. Retighten the bolt with the damper at the desired opening.



Ordering Information					Dimensions			
Model #	Part #	Voltage	End Switch	Damper	A	B	C	D
MD 6"	#23 041	120 V	Yes	Normally Closed	6"	6"	9"	1.38"
MD 8"	#23 045	120 V	Yes	Normally Closed	8"	8"	11"	2.38"
MD 10"	#23 047	120 V	Yes	Normally Closed	10"	10"	13"	3.38"
MD 12"	#23 049	120 V	Yes	Normally Closed	12"	12"	15"	4.38"
MD 14"	#23 051	120 V	Yes	Normally Closed	14"	14"	17"	5.5"

Motorized Damper

Category II MACH® Boiler Applications

Wiring Instructions

Important: Always wire according to local codes.

Damper Wiring Identification

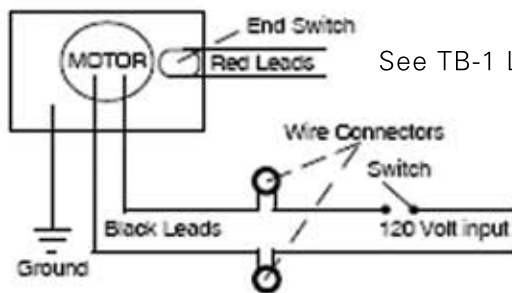
BLACK leads: 120 volt input

GREEN leads: Ground

RED leads: (With end switch only) 120 volt, 10 amps

To Remove/Install Motor Cover

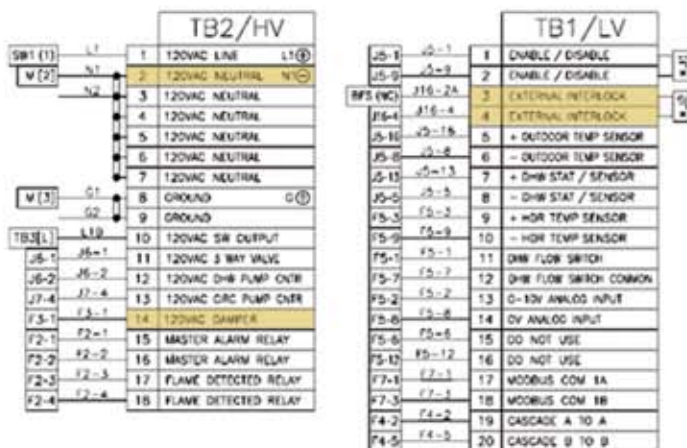
- To remove cover, press in and lift up on end of motor cover with wire hole.
- To install motor cover, place tab on solid end of cover into small slot in motor mount, swing cover over motor and slip second tab into larger slot.



See TB-1 Low Voltage Connections (below)

See TB-2 High Voltage Connections (below)

ENVI® Control



MCBA Control

